

0.24W
0.48W
0.72W

25LM
50LM
80LM

180*140°

IP67

LifeSpan
50,000h

MINI Module for 2-6cm Depth Signs

Injection molding plus ultrasonic welding technology, protection grade up to IP67.

Diamondback 180*140° optic lens with uniform illumination.



Features >

- Powered by high output 2835 LED.
- 99.99% gold thread, pure copper bracket coated with silver.
- Diamondback 180*140° optic lens.
- 40 pcs per string.
- CE, RoHS and UL certified.

Application >

- Apply to 2-6cm depth signs at airports, metros, banks, buildings and shopping malls, etc.

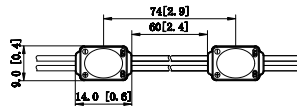
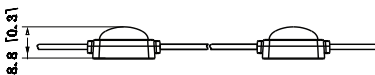
Parameters >

Items	Parameters		
Part Number	1 LENS	2 LENS	3 LENS
CCT (K)	7000K	7000K	7000K
Beaming Angle (°)	180*140	180*140	180*140
CRI (Ra)	≥75	≥75	≥75
Luminous Flux (lm)	25	50	80
Voltage (V)	DC12	DC12	DC12
Power (W)	0.24	0.48	0.72
Driving Method	Constant Voltage	Constant Voltage	Constant Voltage
Dimension (mm)	14*9*8.8	26*9*9	38*9*9
Working Tem. (°C)	-25 ~ +60	-25 ~ +60	-25 ~ +60
Storage Tem. (°C)	-25 ~ +70	-25 ~ +70	-25 ~ +70
Protection Grade	IP67	IP67	IP67

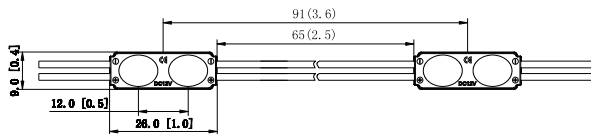
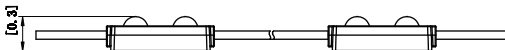
Dimension >

Unit:mm

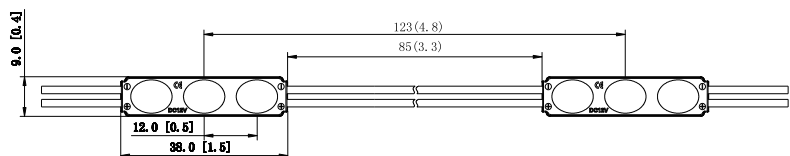
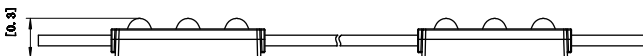
ZE01CA1



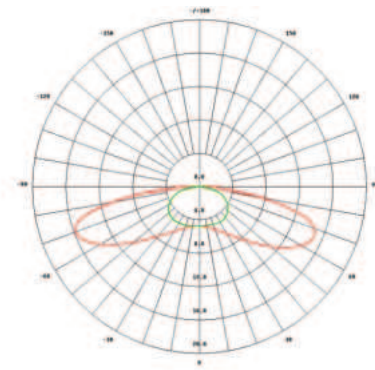
ZE02CA1



ZE03CA1



Beaming Angle >



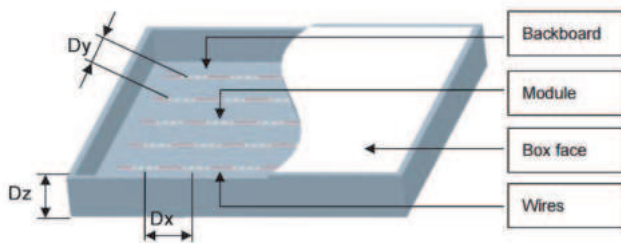
180*140°

Reference Scheme >

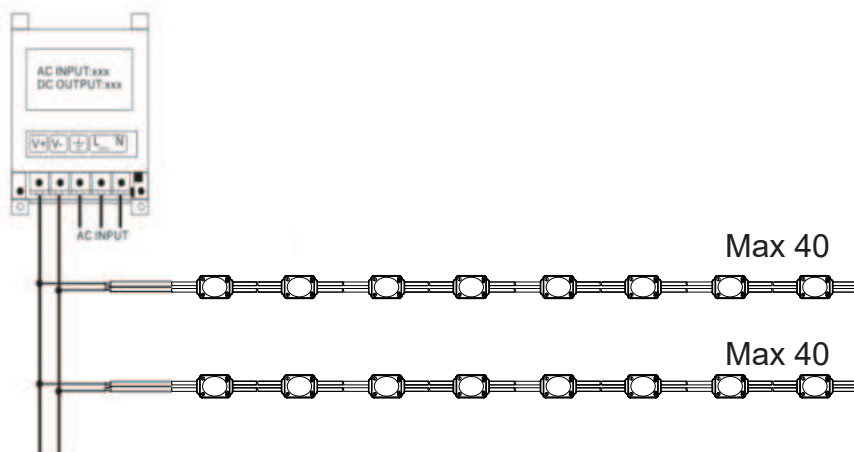
Depth(mm)	Size(mm)	Square(m ²)	Distance(mm)	Density(pcs/m ²)	Illumination(lux)
20	120*120*20	0.24	30	50	5500-6000
30	140*140*30	0.24	40	50	5000-5400
40	160*160*40	0.24	50	50	4000-4500
50	180*180*50	0.24	60	50	3500-3700
60	200*200*60	0.24	70	50	3300-3500

Remark:

- The acrylic plate in the case is 3mm thickness, and the light transmittance is 54.4%.
- The illumination above is the minimum data when evenly lighted.
- The above data is for reference only.



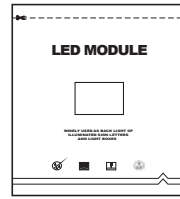
Wire Connection >



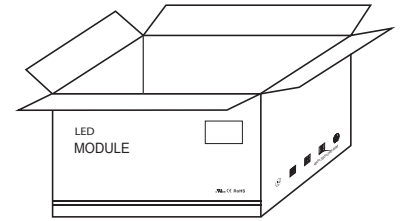
Packing



ZE01CA1: 40 pcs per string
 ZE02CA1: 40 pcs per string
 ZE03CA1: 40 pcs per string



200 pcs in an antistatic bag
 160 pcs in an antistatic bag
 120 pcs in an antistatic bag



3200 pcs per carton
 2560 pcs per carton
 1920 pcs per carton

Packing Specification

- Antistatic bag adopted
- Packing information

Part Number	1 LENS	2 LENS	3 LENS
Carton dimension(mm)	390*290*340	390*290*340	390*290*340
Bags per carton	16	16	16
Quantity per carton(pcs)	3200	2560	1920
Net Weight(kg)	6(1±10%)	7.2(1±10%)	7.8(1±10%)
Gross Weight(kg)	7.5(1±10%)	8.7(1±10%)	9.3(1±10%)

- Due to the packing manner difference, please adhere to the original products in case of discrepancy found between the picture and actual product.

Warning

- Disassembling or modifying the product is forbidden.
- Installation with power on is forbidden.
- Any organic solvent chemical is forbidden.
- Acidic or alkaline adhesive is forbidden when install, neutral glass cement could be used for installation purpose, make it drying in open environment for four hours.
- Isolation and corrosion prevention on all wiring points and wire ends.
- Make sure the power wire is thick enough and ensure the voltage and connections are connected correctly before power on.
- This product should be used in a sign, do not expose it in opening site.
- Installation, maintaining should be done by professional staff.
- 40 pcs in a serial connection maximum.
- The power wire between power supply and module should be less than two meters to keep the same brightness on all parts.
- Attached with 3M tape.

Declaration



- Warranty: 5 years.
- In order to ensure the safety, the broken wires need to be replaced by the manufacturer or the service agent, or by the staff with the similar qualification.
- The given data in the specification was based on the laboratory testing, there may be discrepancy found in the actual products.
- The given drawings in the specification are only for reference, there may be discrepancy found in the actual products.
- The products are subject to change without prior notification.



RoHS

BUCUREȘTI:
bucuresti@verla.ro
Tel: +4 0729 016 484

CLUJ-NAPOCA
cluj@verla.ro
Tel: +4 0721 242 216

IAȘI
iasi@verla.ro
Tel: +4 0746 124 531